



VALIANT SQUARE



VALIANT SQUARE, BURY, HUNTINGDON PE26 2PQ
Sympathetically refurbished four bedroom family homes

Storey
HOMES

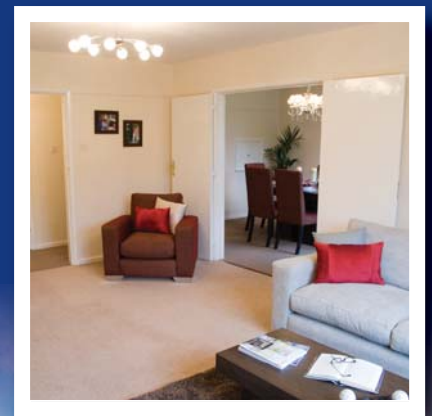
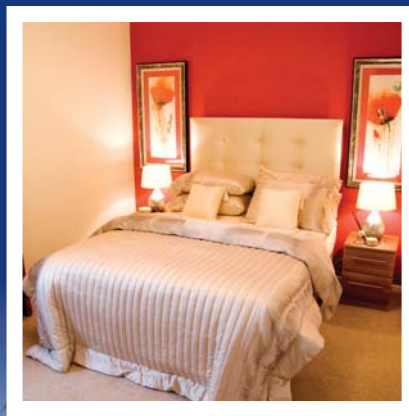
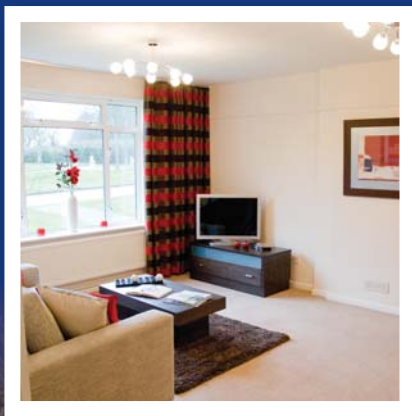
SUBSTANTIAL FAMILY HOMES IN A SEMI-RURAL LOCATION

Valiant Square reflects the accomplished upgrading and refurbishment of an enclave of homes into an attractive collection of substantial family homes perfect for today's lifestyles.

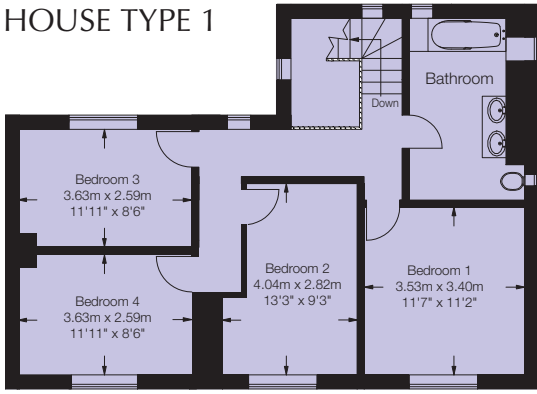
Located on the outskirts of Bury, itself neighbouring the pretty town of Ramsey, the location of the development is superb, with open fields bordering the south and east providing wonderful views and a tranquil outlook.

The houses themselves have been sensitively refurbished to provide the ideal family environment, with a stylish showhome illustrating the high standards achieved. The overall impression is of light and space, with large double glazed windows a feature. Kitchens have been refitted to include high quality units with integrated oven, hob and hood, and separate utility rooms allow for a number of additional appliances. Bathrooms have been totally overhauled, with new good quality white suites finished with stylish contemporary fittings. Lounges offer spacious accommodation, with the added convenience of connecting double doors to dining rooms comfortably proportioned to allow for entertaining. Additionally, each property benefits from private gardens and most have individual garaging.

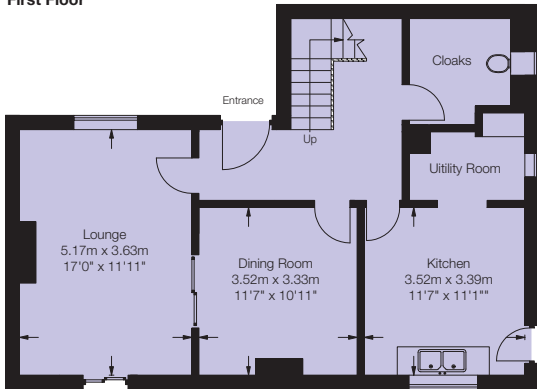
The overall environment is particularly attractive, with open spaces dotted with mature trees to provide a leafy, peaceful terrain.



HOUSE TYPE 1

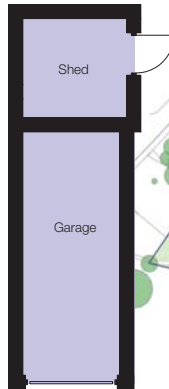


First Floor



Ground Floor

Approximate Gross Internal Area
134 sq m / 1442 sq ft
(excluding outbuilding)

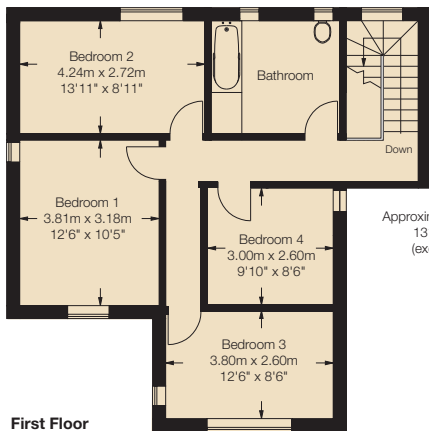


Outbuilding

- House type 1
- House type 2
- Reserved

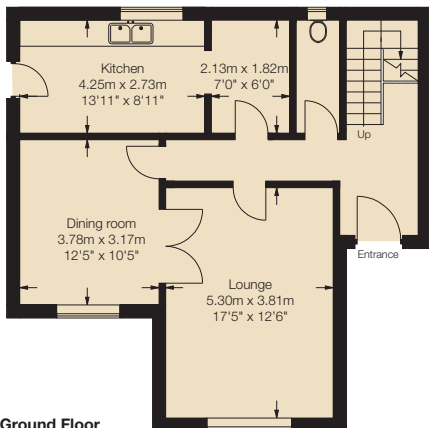


HOUSE TYPE 2

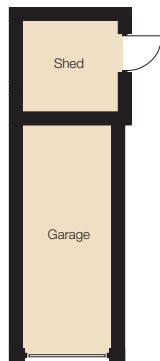


First Floor

Approximate Gross Internal Area
131 sq m / 1410 sq ft
(excluding outbuilding)



Ground Floor



Outbuilding



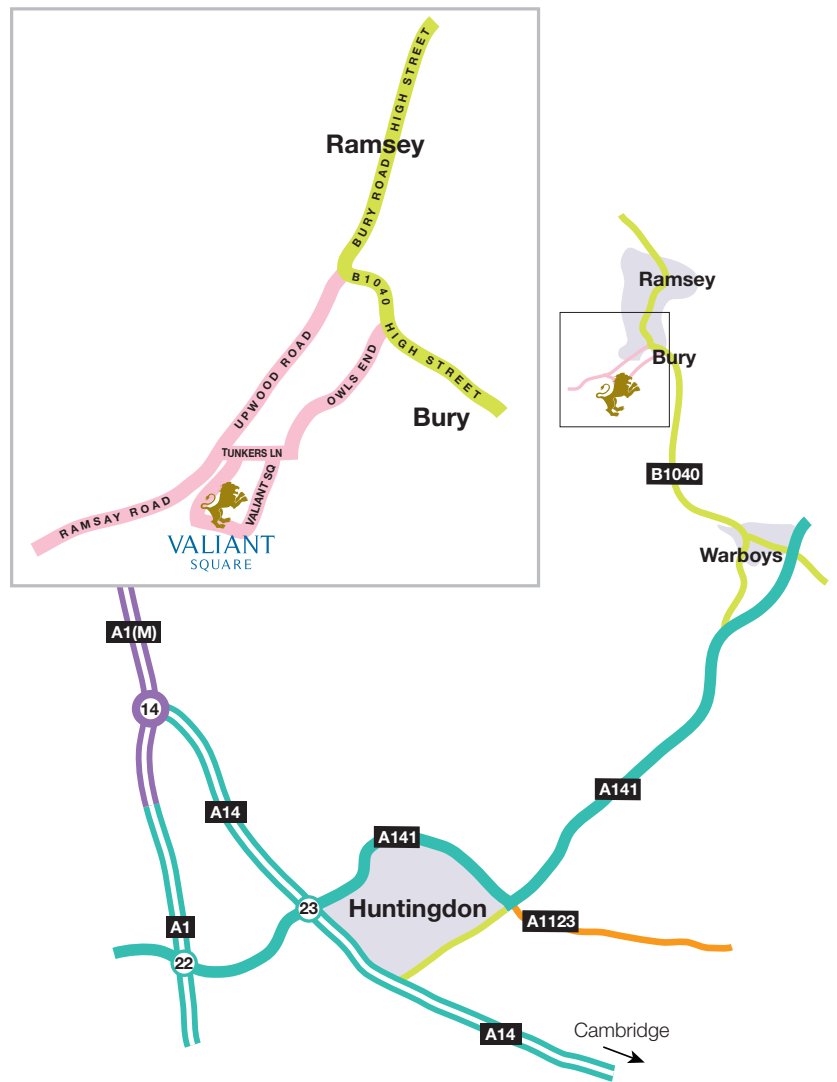
A PRIME LOCATION

Valiant Square occupies a position just south of the historic town of Ramsey, itself built around Ramsey Abbey, dating from 969AD. Just 20 minutes drive from Huntingdon, Ramsey is a peaceful town, with a picturesque centre offering a selection of local shops, cafés, pubs and restaurants; ideal for everyday needs. For those enjoying an active lifestyle there are options for different sports, with golf clubs in particular proving popular.

Schooling in the area is excellent, especially at primary school level.

Further afield, Huntingdon and Peterborough between them offer more opportunities for shopping and leisure activities, from supermarkets to high street chains, niche outlets and independent retailers. Sporting facilities, covering a whole spectrum of activities, are easily found, and for those less active there are a number of different options, from cinemas to eating out, with restaurants offering dishes from around the world.

Travelling is excellent from this area; the close proximity of both the A1(M) and the A14, both around 25 minutes from Ramsey make for easy local commuting - Cambridge is only 30 miles away - whilst trains from Huntingdon to London Kings Cross take around an hour; ideal for city commuters.



**VALIANT
SQUARE**

Valiant Square, Bury, Huntingdon PE26 2PQ

For further information and to arrange viewing appointments please contact our selling agents:

Storey
HOMES

Storey Homes, First Avenue, Denbigh West Industrial Estate, Bletchley, Milton Keynes, MK1 1DX

Tel: +44(0) 1908 363411 • Fax: +44(0) 1908 630048

Email: info@storey-homes.co.uk • www.storey-homes.co.uk